

# 576 NATOMA STREET

SAN FRANCISCO, CA

*±3,450 SF Creative  
Commercial Single  
Tenant Building*

 TAKE VIRTUAL TOUR

**SCOTT VIX**

415.309.4015  
scott.vix@kidder.com

LIC N° 01407761

**GARY COHEN**

415.229.8909  
gary.cohen@kidder.com

LIC N° 00831936

[KIDDER.COM](http://KIDDER.COM)



 Kidder  
Mathews





*Versatile Open Floor Plan Flooded  
with Natural Light*

Operable windows

Skylights

Conference room

Two (2) private offices

HVAC on both floors

Utility sink with upper & lower cabinets, refrigerator,  
and dishwasher

Both wood flooring and concrete floors

Garage door loading or parking

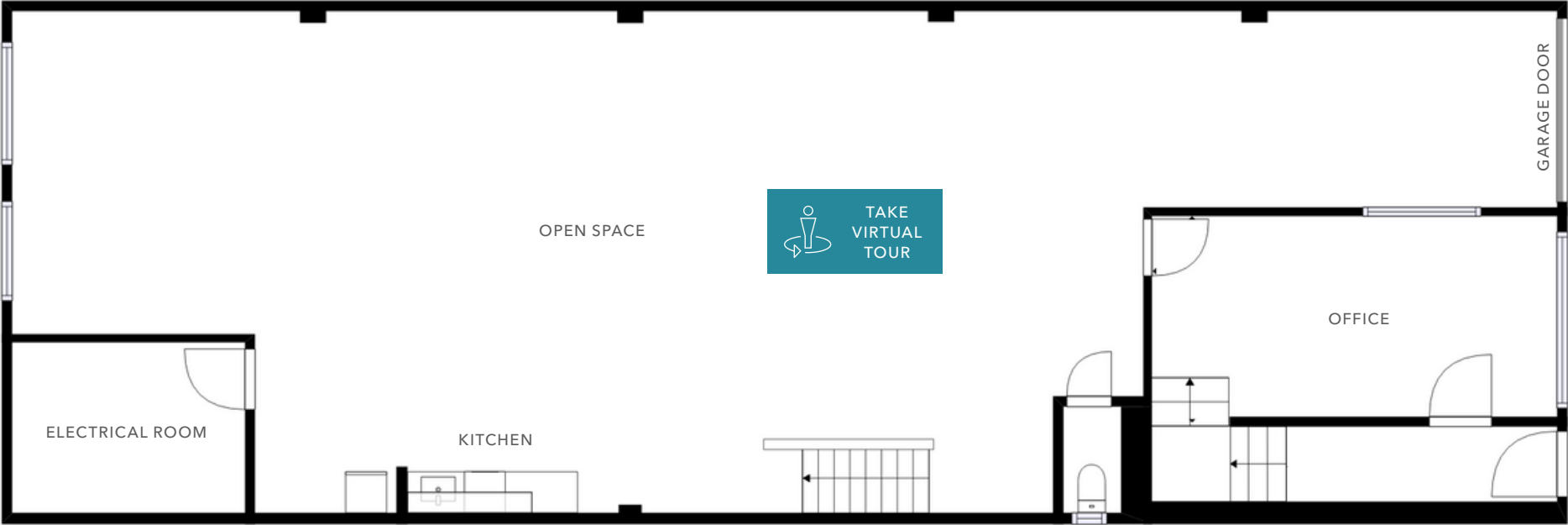
RED (SOMA Residential Enclave)

1.5 blocks to BART

*NOW*  
AVAILABLE

*\$6,900*  
LEASE RATE MO/IG

# GROUND FLOOR PLAN

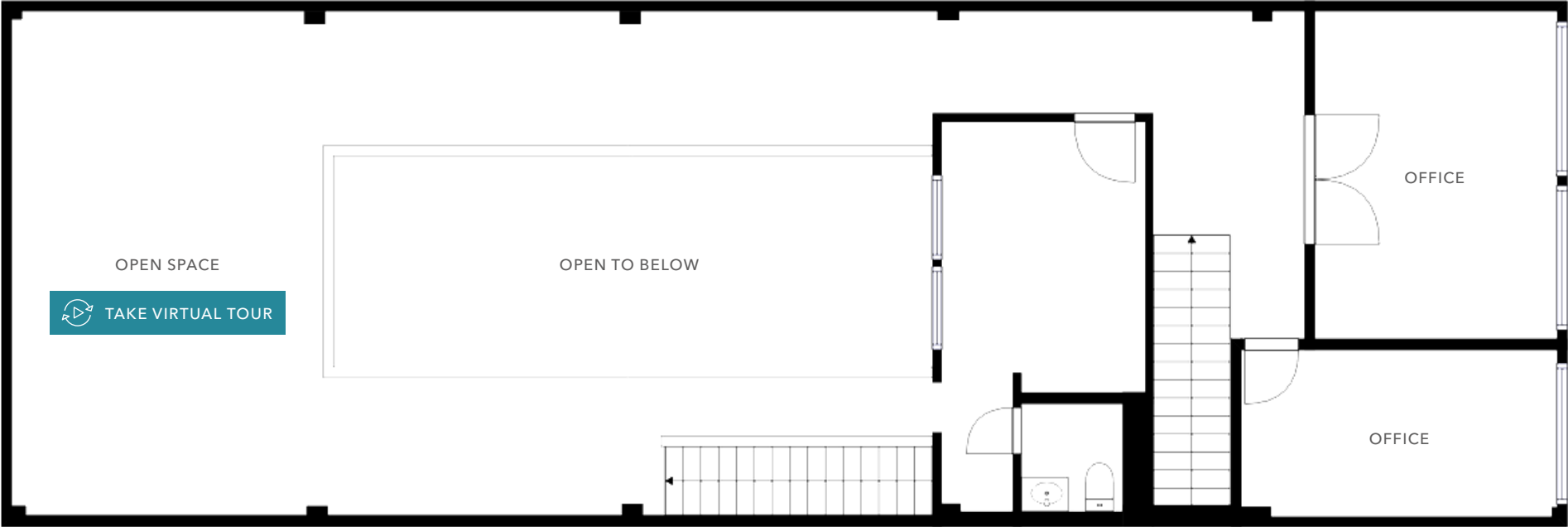


FLOOR PLAN NOT TO SCALE

# GROUND FLOOR



# SECOND FLOOR PLAN



FLOOR PLAN NOT TO SCALE



# SECOND FLOOR







# 576 NATOMA STREET

*For more information on this property, please contact*

**SCOTT VIX**  
 415.309.4015  
 scott.vix@kidder.com  
 LIC N° 01407761

**GARY COHEN**  
 415.229.8909  
 gary.cohen@kidder.com  
 LIC N° 00831936

[KIDDER.COM](http://KIDDER.COM)

This information supplied herein is from sources we deem reliable. It is provided without any representation, warranty, or guarantee, expressed or implied as to its accuracy. Prospective Buyer or Tenant should conduct an independent investigation and verification of all matters deemed to be material, including, but not limited to, statements of income and expenses. Consult your attorney, accountant, or other professional advisor.

